



THE CARE AND FEEDING OF RV TIRES

Pat Meisenholder
Chris Brooks

February 8, 2022

DOT INFORMATION

DOT	PLANT	TIRE SIZE	OPTIONAL CODE	MANUFACTURE DATE (WEEK, YEAR)
-----	-------	-----------	---------------	----------------------------------



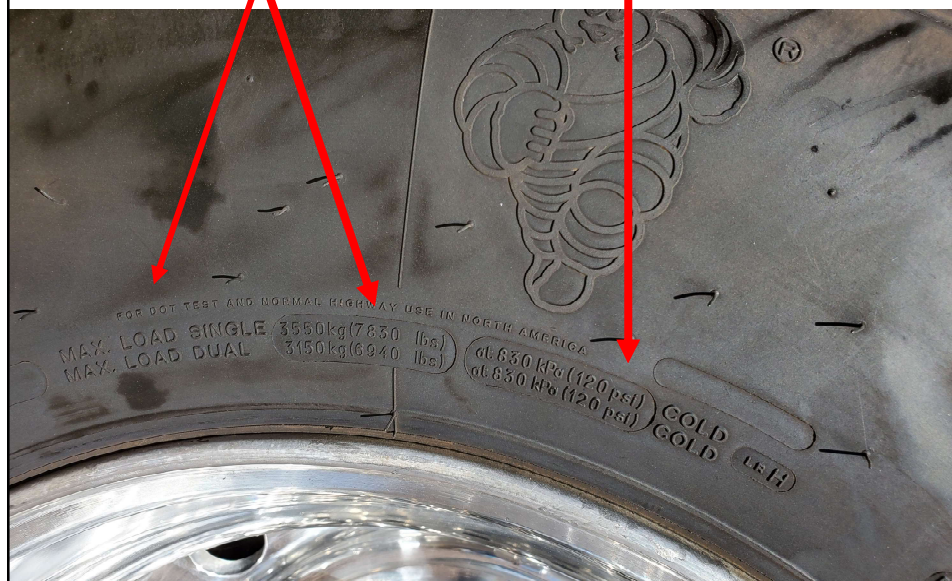
LOAD / PRESSURE INFORMATION

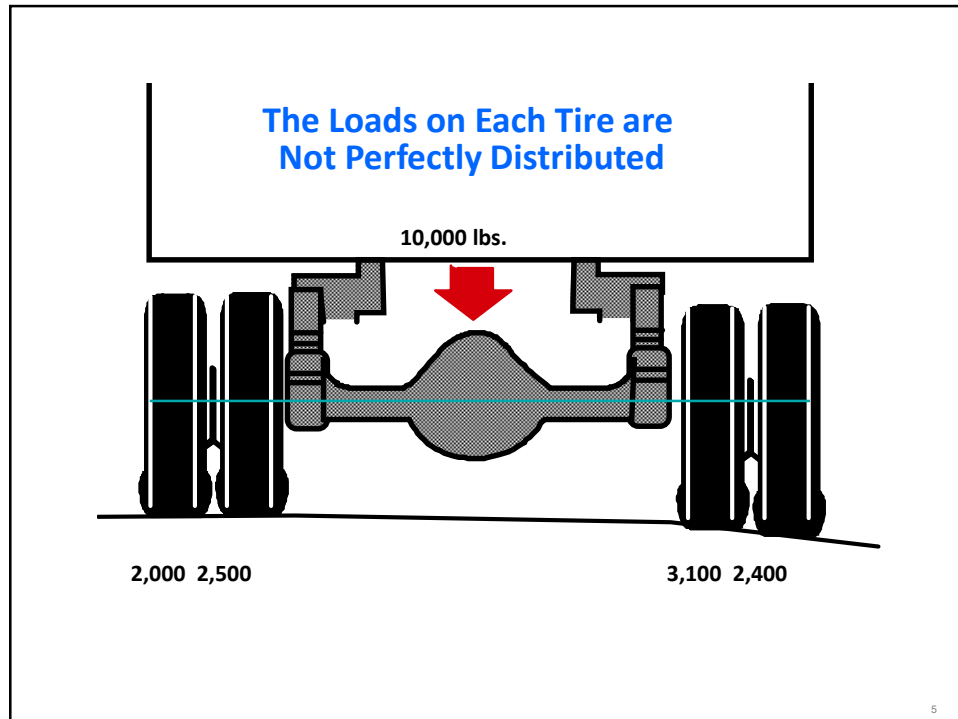
NHTSA requires tire manufacturers to indicate on the sidewall of the tire the **maximum** loaded ratings for single and dual application with the corresponding **maximum** air pressure.



3

MAXIMUM LOAD, MAXIMUM PRESSURE





LOADS (READY TO TRAVEL)

- Weigh each axle end separately.
- Check vehicle data plate for Gross Vehicle Weight Rating (GVWR) and the Gross Axle Weight Rating (GAWR)
- **Include your Towed Vehicle**
- **Include Fuel, Water, Food, Supplies**
- Re-weigh your motorhome when you make a significant change (i.e. reorganize basement, new vehicle, new hobby).



PROPER INFLATION

- The required cold tire inflation pressure for each axle will vary, depending on weights
- **Never** let air out of a **Hot** tire!
- Cold Inflation Pressure= Resting for at least **3 hours**.



7

TIRE PRESSURE MONITORING SYSTEMS

- TPMS (Tire **P**ressure **M**onitoring **S**ystem)
- Remote read-out
- Cold to hot tire pressure differential now visible
- **Expect an increase of 10-15% in air pressure during operation- sometimes more!**
- Some systems show temperature.



8

TIRE WARRANTY

- 1) Limited warranty against defects in workmanship and materials for the life of the original tread, or 7 years from date of purchase, whichever occurs first.
- 2) For OE vehicles, the purchase date of the new motor home serves as date of tire purchase.
- 3) Applies to original consumer.
- 4) Visit www.michelinrvtires.com to register your tires.



9

TIRE LIFE FOR RECREATIONAL VEHICLES

- 1) **INSPECT.** The sidewalls and tread area should be visually inspected, annually, prior to taking any long trips, and anytime the RV is serviced.
- 2) **NOISE.** Be aware of other dynamic performances, such as **increased level of noise or vibration**, increased frequency of loss of inflation (more than 2 psi per month)
- 3) **AGE.** Michelin recommends any tires, including spare tires, should be replaced once tire reaches 10 years by DOT, even if they have not reached the legal wear limit.



10

WHEN TO REPLACE TIRES

- Inspection results
- Sidewall cracking exceeds 2/32" deep
- Tread worn to 4/32" front and 2/32" rear
- Warranty expires at 7 years of use; never exceed 10 years (based on DOT).



11



TIRE CHEMISTRY 101



12

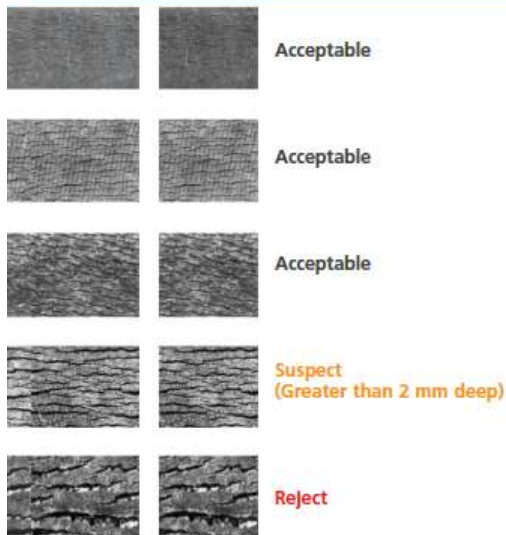
PREVENTING SIDEWALL CRACKING

- During operation, the heat generated within the tire promotes longevity, as internal chemicals (such as anti-ozone protectant waxes) warm up and protect the sidewall rubber.
- Premature aging can occur if the tire does not have the chance to operate (at least one hour, every 6 weeks).
- Tire Shades help provide UV protection when you are parked for longer periods of time.
- Sidewall dressings. Do not use dressings that contain:
 - Petroleum,
 - Silicone, or
 - Alcohol.



13

OZONE SCALE



14

LONG TERM STORAGE

- Clean tires – no dressings.
- Inflate tires - maximum pressure on sidewall.
- Barriers- between the tire and the storage surface: plastic, rubber mats, plywood, cardboard.
- Indoors- Store in a cool, dry sealed area- away from electrical generators or motors.
- If outdoors- Tire covers.

- Remember to check pressures and adjust them before driving.



15

SIGNS OF LONG TERM STORAGE ON CONCRETE



16

“CRITICAL FACTOR – RAPID AIR LOSS”

- When sudden deflation is noticed, step down on accelerator
- **Do not immediately apply brakes !!!**
- Steer straight ahead
- When control is maintained, slow down and pull over
- Video, The Critical Factor – RV version at www.michelinrvtires.com



17

FINAL THOUGHTS

- Weigh your RV loaded, by axle end
- Register your tires; keep track of tire age.
- Inspect your tires frequently.
- Check air pressure with a calibrated gauge when tires are cold
- Never allow a repair to be performed on the wheel – always remove for complete inspection.



18

MICHELIN MICHELIN NORTH AMERICA RV TIRES
TIRES REFERENCE MATERIALS DEALER & SERVICE LOCATOR

www.michelinrvtires.com

NEW RV TIRE SELECTOR
SEARCH, COMPARE AND FIND THE PERFECT TIRE FOR YOU»



NEW RV TIRE SELECTOR EXPLORE OUR RV TIRE GUIDE READ ALL ABOUT OUR NEW SITE

Consumer Care 1-888-622-2306

19

Thank You 

20